

The Parish of Bardsey with East Keswick

Village News



DEC 20 – JAN 21

A round up of church news
and activities from the
villages of Bardsey, East
Keswick and the
surrounding area

The season
of light and
good will...



Contents

A Winter's Tale	3
From the Vicarage	4
Christmas in the Parish	5
From the Register	6
Village Updates	7
Bardsey Playgroup	8
Twin A Loo	9
Village News Magazine Deliveries	10
Living with the Psalms	12
Eco Church Award	13
The New School Normal	14
Christmas Quiz by Churches Together	15
Children's Corner Nursery at Bardsey School	16
The Children's Society Box Collection	17
Helping Wildlife in your Garden this Winter	18
Reverse Advent Calendar	20
Seasonal Recipe	21
Trade and Services Directory	23

A Winter's tale...

As winter settles in and we all plan for a rather different Christmas we can still look forward to those brisk walks in the beauty of the countryside, made even more important as a way of keeping our spirits up at this rather difficult time.

Our landscape has a rather different but no less beautiful appeal in the winter months.

A warm fire, a comfy chair and the Village News to keep you company. What more could you want?

The night is darkening round me,
The wild winds coldly blow;
But a tyrant spell has bound me
And I cannot, cannot go.
The giant trees are bending
Their bare boughs weighed with snow.
And the storm is fast descending,
And yet I cannot go.
Clouds beyond clouds above me,
Wastes beyond wastes below;
But nothing drear can move me;
I will not, cannot go.

Emily Bronte

From the Vicarage

Angela Hannafin



This is the third edition of our new look magazine and this time it's available both online and in printed format.

Thank you to everyone who has provided articles and contributions for this edition and for those who will help with deliveries.

We are heading towards the Christian season of Advent, which runs from the end of November until Christmas.

Advent is traditionally a time of waiting and I can't help but think it's so apt for all we're going through. Waiting to come out of lockdown, waiting for a vaccine, waiting for good news.

For Christians, at the end of our December waiting, there is good news. We remember Jesus Christ, who came into the world as a vulnerable baby, to be with us.

In the Old Testament, one of the names for God is "Immanuel" - which means "God is with us". In Jesus, we remember the promise of God to always be with us. Even if we're still waiting.

I know we are all facing a very challenging Christmas. There is a great deal of support in our villages, but many of us still have days where we can feel overwhelmed by all of this waiting! If you would appreciate a chat with someone, do contact our Parish Office. We don't want anyone to feel isolated.

Whatever your Christmas looks like, I hope you can take comfort from the reminder that God is always with you and will go with you into the future, however tough it gets.

Every blessing

Angela



Christmas in the Parish

At the time of printing our churches are unfortunately closed for Sunday services, due to the national lockdown. We hope to resume services when lockdown ends but please consult our website for the latest updates or contact the Parish Office for information.

When services do resume the need to comply with social distancing means that we will have limited seating available at both churches, and therefore if you wish to attend a service you will need to contact the Churchwardens in advance to confirm your seat.

If you just turn up a seat may not be available for you in church.

Our planned Christmas services are shown here but they may change, depending on lockdown regulations.

Your safety is our priority, which means we may need to cancel or change services at short notice.

Service Times

SUNDAY, 20 DECEMBER 2020

All Hallows 08.30 and 10.30
Saint Mary Magdalene 09.30

THURSDAY, 24 DECEMBER 2020 CHRISTMAS EVE

Midnight Mass at both All Hallows and Saint Mary Magdalene at 23.30

FRIDAY, 25 DECEMBER 2020 CHRISTMAS DAY

There will be at least one joint service in the parish. Details will be confirmed nearer the time.

SUNDAY, 27 DECEMBER 2020

No services.

SUNDAY 3 JANUARY 2021

Normal 'Covid-time' services resume at each church.

All Hallows 08.30 and 10.30
Saint Mary Magdalene 09.30



From the Register

We congratulate those whose
weddings have taken place

KRYSTINA MAWER & THOMAS GOLD

Saturday 8 August, Saint Mary Magdalene

SUZANNAH BIGNELL & ADAM CLEMO

Saturday 29 August, All Hallows

We remember those whose
funerals have taken place

CLIVE BRISTOW

Wednesday 18 March, All Hallows

ROY LECKENBY

Wednesday 25 March, Stonefall

MAUREEN BURRELL

Tuesday 7 April, Stonefall

JANE LONCRAINE

Wednesday 15 April, Saint Mary Magdalene

DIANE CANNELL

Thursday 4 June, Stonefall

ALAN CULLEY

Wednesday 17 June, All Hallows

MALCOLM HAIGH

Monday 13 July, Stonefall

JAMES STYRING

Thursday 6 August, All Hallows

BARRIE STEELE

Friday 2 October, Saint Mary Magdalene

Macmillan Thanks

Thank you for all the donations received for Macmillan Cancer Support, despite having to cancel the Coffee Morning.

I have a total of £320 to put in the bank for a very worthwhile charity.

Christine Burton

East Keswick Methodist Church

We were planning to reopen for worship on Sunday 29 November, however that is not now possible - but we are now prepared and ready!

Weekly online reflections and services will continue at:
www.tadcastercircuit.org.uk/home-worship

Penny Harrison

East Keswick Village Hall Covid-19 Update

Like everyone else, we are very keen to return to normal just as soon as possible but we must be guided by the Government on this. We are watching developments closely but need to be very cautious about committing to opening the hall and all its facilities while restrictions are still in place.

We are particularly aware of the legal responsibilities of the trustees so need to ensure that it really is safe to reopen before doing so.

The 'Village Hall Draw Supper' is postponed until Covid-19 regulations allow us to hold large gatherings; villager's health and safety is vitally important. For the same reason, our annual 'New Year's Eve' event will also not take place this year and it is also

probable that our planned second 'Burns Night' event in January 2021 will also be the victim of cancellation, unless a miracle appears!

Sadly, the Post Office will also have to remain closed until we are able to open the hall once more.

We very much look forward to the day when we can bring you the exciting news that we can reopen but, in the meantime, we hope you and your family remain safe and well.

The full Covid-19 Bulletin can be found on the home page of our website.

The trustees

www.eastkeswickvillagehall.org

Bardsey Playgroup

Gill Nobbs

The children are back at Playgroup. Hooray!

The playgroup is a charity, a member of the Pre-school Learning Alliance and is rated 'good' by Ofsted. It operates weekdays, 9-12am in term time, for children aged between 2-5 years.

The Government funds totally free places for families who qualify.

The staff have worked hard, making the Callister Hall location Covid-19 secure - sanitising every session and changing toys daily.



The children learn through play, in a structured warm and welcoming environment, with a focused activity, having fun and making friendships.

Session time allows children to talk, listen, take turns, learn French and Welsh, practise their colours, counting, social skills and so much more. Crossing the road safely is a necessity soon learnt, in order to reach the extensive garden behind the Village Hall.



The garden had a face lift this summer with new fences and log stepping stones. A sandpit, soil pit, climbing frames, ball run and cycle circuit provide the children with lots of activity and exercise in the fresh air.

The dinosaurs keep playing hide and seek!

The pandemic stopped PE sessions at Bardsey Primary School and the annual sports day, though a family time in a large field did provide lots of renewed fun, at the end of July.

Covid-19 restrictions mean that Santa will not be at a Christmas party this year and there will be no annual Nativity Play in the church. However, the term-time enjoyment continues with Autumn and Christmas creations and a focus on mathematics and writing skills.

Gill

Twin a Loo

Elizabeth Otty

Did you know that
19 November, 2020
was World Toilet Day?

November is a time to remember that one in three people on the planet are **still** without a safe, clean loo. Without toilets, families are constantly falling ill and have to spend the little money they have on medical bills.

A simple toilet can restore a family's health so they can go to work, to send their children to school and build a new home.

Now is your chance to
do something about it!

By donating £60 to Tear Fund you can twin your toilet and help fund a project in a poor community that will enable families to build a basic toilet, have

access to clean water and learn about hygiene – a vital combination that saves lives.

Twin a toilet for
Christmas!

This year why not tie up toilet twinning with Christmas and give a Christmas present with a difference to your house or that of a friend.

After you have twinned you will get a certificate to hang in your loo. Your smallest room becomes the proud owner of a certificate, complete with a photograph of your overseas toilet twin and its GPS coordinates, so you can look up your twin's location on Google Maps.

www.toilettwinning.org

Let us know if you do and become part of our parish Eco Church family.

Elizabeth



Village News Magazine Deliveries

Ever wondered how your hard copy of the Village News magazine comes to you?

Well, it's thanks to a network of wonderful volunteers in our Parish, and as we recommence deliveries of printed copies of the magazine we interviewed the organisers of the distribution teams, Brenda Sanderson (Bardsey) and Debbie Lord (East Keswick).

Brenda and Debbie, how many people deliver the magazine in each village?

Brenda: I have 49 people who deliver a varying number of magazines, from 6 to 50.

Debbie: I have 13 people although there are two vacant spots at the moment. Like Brenda, people deliver a varying number of magazines: from as few as 8 to two stonking rounds of 63!

What's the profile of people who deliver the magazine?

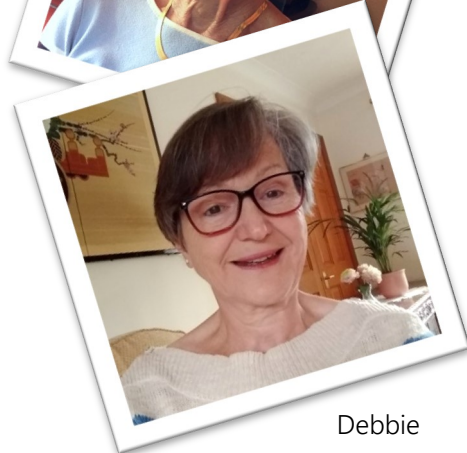
Brenda: They are a mix of people who work and are retired.

Debbie: My current team are all over 60 apart from one lady. In fact people are mainly over 70 and one or two are over 80.

How long have people been volunteering for?

Brenda: Here, some people have been doing it for over 20 years!

Brenda



Debbie

Debbie: I can't say exactly, but some have done it for many years!

Wow that's impressive. Is there anyone you think deserves a special mention?

Brenda: All of our volunteers are special, but as far as I can remember, Hugh Turton has been delivering all the time I have been taking them out. I also believe Hugh was one of the instigators of the Newsletter.

Debbie: I agree, they're all special. I think it's difficult to single anyone out as so many have done it for years.

How long have you been coordinating the teams in each village?

Brenda: I started when my daughter was learning to drive at 17. That is over 35 years ago!

Debbie: I've been coordinating for over ten years now. I took over from Jan Dower who had been in charge for many years.

It sounds like a large team. As you start delivering again, do you need any more volunteers?

Brenda: I'm doing ok at the moment although if I need one, I can easily find one.

Debbie: We do need someone for a stretch of White Gate. Let me know if you can help!

Where would we be without our magazine deliverers? We're so grateful to them, and to you for ensuring people can continue to receive their magazines during this difficult time.

Thanks for sharing your story with us.

Nearly 1,600 copies of the Village News are delivered across the four villages in our parish



Living with the Psalms

Churches Together in Bardsey and East Keswick



In difficult times like these, people often turn to poetry, or music, as a way of expressing themselves. In the same way, people in the Psalms wrote poetry, and many have found consolation through these 150 different biblical poems over the years. This ancient poetry is still relevant today.

Online Bible Study

From January 2021, the Churches Together team are inviting you to join an online Bible study based on John Bell's book, '[Living with the Psalms](#)'.

The study will run over six sessions on a Wednesday evening, starting on 13 January, at 7pm, via Zoom. Each session will run for an hour, and include some discussion and study of a psalm.

All are welcome!

You will need to buy a book to attend this study, although this is easily available on Amazon or similar vendor.

Programme

Session 1: 13 January

What is it about Psalm 23?

Session 2: 20 January

A Vocabulary for Pain.

Session 3: 27 January

Hot Gossip and Hard Places.

Session 4: 4 February

Jesus and the Psalms

Session 5: 11 February

God and Nature.

Session 6: 25 February

The role of Deep Praise

Please note, there is no study on Wednesday 18 February, as this is Ash Wednesday.

If you're interested in attending, please email Revd Angela Hannafin at angelalewisjane@gmail.com

For he will command his angels
concerning you to guard you in all your
ways...

Psalms 91:11

Eco Church Award

Elizabeth Otty



We are delighted to be able to announce that All Hallows Church has gained an Eco Church Bronze award, from A Rocha UK.

A Rocha UK is Britain's only Christian conservation charity providing scientific research, and environmental education. They focus on delivering practical local community-based action through all our country's churches.

A Rocha is a global organisation, which started in Portugal in 1983, A Rocha has spread around the world as a Christian response to climate change.

'A Rocha' is Portuguese for 'The Rock'

Committed to protecting God's creation the organisation now involves thousands of people, of all ages and many faiths, in activities which introduce them to local and global environmental issues.

Both All Hallows and Saint Mary Magdalene are continuing on their eco journey. Please join us by checking out the environment section on our web site and making your own personal commitment to address climate change by taking the **Ten Pledge** challenge.

For more information about the work going on to bring our churches up to the highest eco standard and what you can do to help, contact Elizabeth in the Parish Office.

Remember we all have a part to play.



“

The greatest threat to our planet is the belief that someone else will save it...

Robert Charles Swan

The New School Normal

Helen Render

Having completed the first half-term at Bardsey Primary School since lockdown, Year 5 were asked to write a short report about how they felt returning to school in September; the rules which were in place; how the half-term progressed and how they feel about returning after half-term.

I hope some of the children's remarks will give you a flavour of what life is like at the 'school-on-the-hill', at the present time.

Georgia Thompson: Returning to school in September was a pretty interesting experience. It wasn't how I imagined it to be – it was a whole new world!

Will Taylor: Crikey! I never thought that school would be THIS different! I'm not happy, nor sad. Quite glad I'm back though.

Sophie Crowther: The new rules around school are all so strange, but definitely worth it so that we can come to school.

Audrey Stevenson: There are very different rules and procedures, like the one-way system in the corridors and there are even Zoom call assemblies, since we're not allowed to meet in one place.

Zulaykha Hussain: I was shocked because there was tape and hand sanitiser everywhere!

Hugo Farad: We have to eat our lunch in the classroom and the school dinners are now called 'grab bags'.

Florence Jones: At playtimes, we can only go on one side of the playground and we have to stay in our classrooms until other classes have come in. Also, we have all our own pens and pencils and aren't allowed to touch each other's.

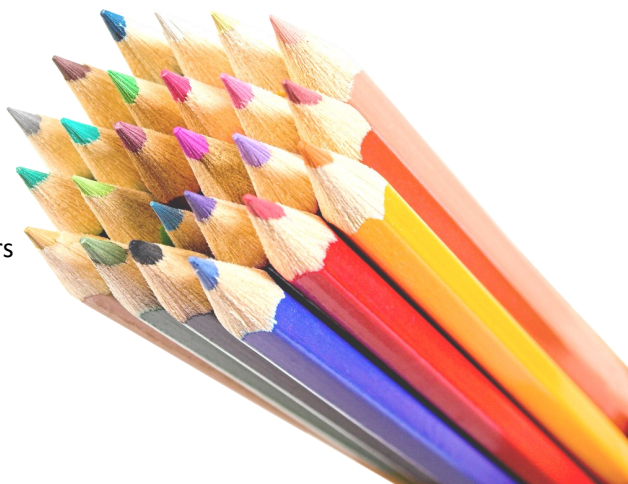
Peter Osborne: As the half-term progressed everybody relaxed a bit more and got more comfortable with all the rules that the school had put in place to protect us kids from Covid-19.

Billy Davis-Earp: I have got used to it now, as all the teachers and staff have helped us settle in.

Reece Birch: It has been easier than I thought it would be to adapt to a new system at school.

Thomas Kimball: The new 'normal' has become the actual normal and it's great to be back!

Eva Crabtree: Life at Bardsey School has definitely changed, but I'm looking forward to the next half-term!



Christmas Quiz by



Wednesday, 2nd
December, 8pm

Normally, at this time of year, Churches Together in Bardsey and East Keswick are well on their way to finalising details of the Villages Christmas Celebration. However, this event is not possible at the moment, so instead we've taken over the monthly Zoom Parish Quiz.

The Zoom meeting will open at 7.45pm so we can chat and see who we are quizzing against and make sure our glasses are filled with whatever takes our fancy too; tea, coffee or a mulled wine perhaps – it is nearly Christmas after all!

Our quizmaster is Charlotte Meek who will guide us through a number of Christmas themed rounds of questions and puzzles.

We would usually take a collection for Martin House but this year we have set up a JustGiving page for donations at:

www.justgiving.com/fundraising/cteastkeswickandbardsey4martinhouse

Martin House
hospice care for children
and young people

Here are a few questions to get you started:

1. What are the names of Santa's nine reindeer?
2. Which carol has the initials THATI?
3. Who introduced the Christmas tree to the UK?

The answers will be revealed at the quiz!

And the winner is...

You will add up your own score at the end of the quiz and the top three will be revealed. Charlotte counts down from the maximum score, so no one will know if you get a low score.

We look forward to welcoming you to this 'alternative' villages Christmas celebration.

Please contact the Parish Office if you'd like a Zoom invitation for the quiz.

T: 01937 574273

E: bardseyparishchur@btinternet.com

Children's Corner Nursery at Bardsey Primary School

Lesley Dawson

Our pre-school nursery based at Bardsey primary school offers the perfect transition into school. We offer places for children from age 2 years to 5 years. Our qualified staff offer a full EYFS curriculum delivered with lots of fun, both in the classroom and exploring the wonderful grounds and surroundings at Bardsey school.

Whilst attending the nursery does not guarantee a place at the school, the majority of children who attend our nursery do go on to Bardsey reception class so it's a great opportunity to meet their friends who they will join in school.

We have lots of visits into reception class so the children meet the teachers and get used to being in the school environment. We are made so welcome at lots of school activities such as trips to the seaside and nativity plays.

We offer full day care including the 15 and 30 hours FEEE funding for 2, 3 and 4 year olds. Please contact the nursery or call in to check eligibility or if you

would like further information. We still have some vacancies for January 2021.

We are open from 7.30am to 6pm all year round and shorter days are available. Contact the nursery on 01937 573999 or call in and see us.

Lesley



"All the nursery staff are fantastic and the nursery is cosy and friendly with so much for the children to do. Our daughter loves being part of the Children's Corner family. The nursery has done wonders for S, she has learnt a lot to prepare her for school and has grown into a confident little girl."

A parent's view

The Children's Society Box Collection

Carol Peace and Helen Render

It's that time of year again when we want to remind box holders that we will be collecting your boxes in the not so distant future – January in fact, but we wanted to give you some notice.

As you know, life is very different at the moment, and we have been considering how best to collect them but the work of The Children's Society doesn't stop and children are more in need of your support than ever before, therefore we do need to find a way.

Thanks to you, we've been able to stay in touch with children isolated by lockdown to let them know things will be okay. We've been able to get food through to families who suddenly found themselves with no source of income and to make sure that the most at-risk children could stay safe. That's the difference you're making.

We are aware, however, that many of you may not have as much cash in your boxes this year, as we are encouraged to pay by card. If you would prefer to hold onto it for another year, this is totally understandable. You may wish to make a donation instead, which we would happily forward to the Society.

If you would like your box to be included, could boxholders in Bardsey please wrap them in newspaper and hand them to **Helen Render** personally, leave them at the back of All Hallows church, where Helen will collect them or

ring her to arrange collection. Could East Keswick boxholders please wait for **Carol Peace** to ring them to organise collection and not leave them in St Mary Magdalene church.

Please bear in mind that counting will take longer this year, as we have to leave the boxes for 72 hours before handling.

If you are not a box holder but feel that you would like to keep a box to put your spare change in throughout the year, to support the Children's Society in this way, please do get in touch so that we can supply you with one – it's easy and very worthwhile!

Thank you.

Carol (01937 573061) and **Helen** (01937 572742)



Helping Wildlife in your Garden this Winter

Gill Taylor

During Lockdown this year, many of us have become more aware of the wildlife sharing our gardens. As well as putting up nest boxes and feeding the birds, here are some other ways you can help wildlife survive the coldest months of the year.

WATER

Provide water for birds and small mammals to drink and bathe but refresh this daily. This could be bowls of water or a pond, however small. Birds and small mammals need clean fresh water even more so when the ground is frozen or when snow is on the ground.

Pond life needs access to oxygenated water. When a pond is frozen over, do not hammer a hole in the ice, as pond life can be harmed by shock waves as the ice is broken open. A hole can be melted by using a saucepan filled with hot water or better still leave a tennis ball floating on the surface all winter.

TIDYING

Leave tidying-up borders until spring if possible. Keep some dead flower stems in your borders for overwintering

beneficial insects such as ladybirds. Seed heads of phlomis, sedums and hollyhocks provide a good winter habitat. To avoid sad looking borders retain seed heads on stems cut down to 15 -20 cm and re-insert the shorter stems to protect the crown of the plant. These can be left to rot down and new shoots will grow through in the Spring.

Clear out ponds between October and January when wildlife activity is low and spread any removed vegetation on the edge of the pond for a few days. This enables wildlife such as snails and dragonfly nymphs to crawl back into the water.

Spending time outdoors is recommended for maintaining good mental health, so dress up warmly and enjoy your garden this winter



HABITAT

Many plants have hollow stems in which insects like to overwinter. These can be cut into short lengths about 20cm long, tied into bundles with string or rubber bands and lodged into thick hedges or shrubs. Alternatively make a 'bug hotel' by boring holes of different diameters into blocks of wood then fix to a fence or wall in a sheltered location.

Piles of sticks, logs, dead stems and leaves, stacked under a hedge or bush, form good shelters for hedgehogs and invertebrates. Stacks of pots, bricks, stones and rubble can house frogs, toads and newts. Any bonfire pile should be checked for hedgehogs before igniting but it is recommended to move the material and build it elsewhere on the day of the burn.

Avoid disturbing an open compost heap during winter as this provides a nice warm spot in the middle for sheltering wildlife.

PLANTING

When selecting seeds or plants for next year, avoid choosing double flowered varieties which bees find difficult to access for nectar. Plant late autumn flowering species which feed insects and butterflies such as asters, sedums, and Michaelmas daisies. Plant shrubs with berries for birds such as rowan, holly, guelder rose and hawthorn.

HEDGEHOGS

Hedgehogs are struggling due to habitat loss and hazards such as, poisoning through the indiscriminate use of slug bait, being caught in netting, damage by strimmers or drowning in steep sided plastic ponds.

Ensure hedgehogs can find their way out of ponds and deep holes and check garden netting regularly for possible entanglement. Disturb areas of long grass before using a strimmer. They have a wide territory and need to roam many gardens at night. Forming a 15cm square hole in the bottom of a fence can help to create a wildlife highway between neighbouring gardens.

Gill

Reverse Advent Calendar

Angela Hannafin

This December we would like to invite you to join us in creating a Reverse Advent Calendar, with the goods collected donated to the St Aidan's Food Share programme.

What is a Reverse Advent Calendar?

Well, instead of opening a window each day to receive a 'goody', you give a 'goody' to someone else instead.

In this case the 'goodies' are everyday, staple provisions, with a few treats thrown in.

So, why not collect an item each day through December to give to those in Leeds, who have very little.

You can give these provisions to us at the end of December or use the drop off points in Bardsey (Vicarage on Woodacre Lane) and East Keswick (box outside 21 The

Paddock), each week.

Here's a suggestion for what you might collect each day for your Reverse Advent Calendar. You can change the order or put other items in if you prefer! How you do it is up to you!

If you'd prefer not to buy the items yourself, we are very happy to purchase them on your behalf so please contact the Parish Office if you'd like to do this.

December's extra shopping list

- 
- | | | | | | |
|----|----------------------------------|----|------------------------|----|-----------------------|
| 01 | Baked beans | 09 | Shower gel | 17 | Tinned meat |
| 02 | Tinned fruit | 10 | Shampoo | 18 | Cooking oil |
| 03 | Tuna | 11 | Razors/male toiletries | 19 | Flour |
| 04 | Rice | 12 | Sanitary products | 20 | Biscuits/sweet things |
| 05 | Washing powder/washing-up liquid | 13 | Tea/coffee | 21 | Chocolate |
| 06 | Pasta | 14 | Nappies | 22 | Treats for children |
| 07 | Toilet rolls | 15 | UHT milk | 23 | Cereal |
| 08 | Toothpaste | 16 | Soup | 24 | Pot noodles |

Seasonal Recipe

GERMAN ADVENT COOKIES

- 3 egg whites
- A small pinch of salt
- 200g icing sugar
- 300g finely ground raw almonds
- 2 tsp. ground cinnamon

(Makes about 55)

Whisk the egg whites and salt with a mixer on a medium-high speed. Pour in the sugar slowly and whip for 7 minutes, or until the mixture is glossy and stiff. Measure out about three heaped tbsp. and set aside.

Fold 225g of the almonds and the cinnamon into the remaining egg white mixture. Continue adding the rest of the almonds until you have a firm, slightly sticky dough. You may not need the whole 300g. Wrap the dough in clingfilm and refrigerate for 30 minutes.

Line two baking trays with paper. Unwrap the dough, and roll it out to

6mm thickness between two sheets of clingfilm. Using a 4cm star-shaped cookie cutter, cut out the cookies. Dip the cutter in cold water every so often to keep the dough from sticking. Put the cookies on the baking sheets.

Using a spoon and a toothpick, spread the reserved meringue evenly over each star, taking care to drag it out to the points. Let the cookies sit at a cool room temperature for 12-24 hours. The meringue will be dry to the touch.

Heat the oven to 180°C / 350°F (gas 4).

Bake the cookies, one baking tray at a time in the bottom of the oven, for 3-4 minutes or until the meringue is set but still snowy white.

Remove the baking tray and put it on a rack. Let the cookies cool completely on the tray. Once completely cooled, store in an airtight container. They will keep for up to a month.



The Village News

The Village News is published bimonthly by the Parochial Church Council of the Ecclesiastical Parish of Bardsey with East Keswick and distributed free of charge to all households in the Parish. However to help cover the cost of printing and administration a donation of £1 per copy would be appreciated.

Some printed copies are also available at the back of All Hallows and Saint Mary Magdalene churches and digital copies can be viewed or downloaded from our website.

We welcome contributions from our village communities, relating to news, events and topics of interest, for possible inclusion in the magazine, without charge, which would be published at the discretion of the editorial team.

Please send entries for inclusion to:
bardseyparishchur@btinternet.com

**Copy deadline for the February -
March 2021 edition is Friday, 15
January 2021**

What can I give Him, poor as I am?
If I were a shepherd, I would bring a lamb;
If I were a Wise Man, I would do my part;
Yet what I can I give Him: give my heart.

In the Bleak Midwinter, Christina Rossetti



Trade and Services Directory

BUILDING & HOME SERVICES: PAGES 24-26

Add Cleaning

E W Vickerman, Cabinetmaker &
French Polisher

Greystones – Staithes, Holiday Home
Rental

Hyland Builders Ltd

J K Egan, Upholsterer

Lockfarr Locksmith & CCTV

Locksmith & Security Installer

LS22 Electrical Ltd

Marsland Roofing Ltd

Park Lane Homes Ltd

Paw Paw Pet Services

Polkadot Bespoke Picture Framing

Tate Fuel Oils

Thorner Flooring Services

SMT Maintenance

DECORATORS & PLUMBERS: PAGE 26-27

Anthony Shortall, Painter & Decorator

M. Martin Plumbing & Heating
Specialist

Maxwell Decorators

Sam Watts Plumbing

SFR Plumbing & Heating

S. P. Harrison, Painter & Decorator

GARDENING & LANDSCAPE SERVICES: PAGE 28

Bardsey Tree Services

Dalby Landscapes

Gardens & Trees

Graham Landscapes

JMA Landscape Services

HEALTH & WELLBEING: PAGE 29

Pauline Hughes Chiroprapist

Rehab Beyond Cancer

Wood View Sports Massage & Holistic
Therapies

Home Instead Senior Care

ProMedica 24 Live-in Care &
Companionship

PERSONAL & FINANCIAL SERVICES: PAGES 30-31

Andrew Morgan Opticians

Boston Spa Garage & Wetherby Repair
Shop

Counselling - Adrienne Crew

EKOne Hairdressing

FJB Accounting Limited

Gillbeck Associates Ltd, Accounting &
Bookkeeping

G. E. Hartley & Son Ltd, Funeral
Directors

Parker Hartley & Co, Financial
Accountants

VENUE HIRE: PAGE 31

Bardsey Village Hall

Callister Hall

East Keswick Methodist Church

East Keswick Village Hall

BUILDING & HOME SERVICES



ADD CLEANING

Sue Thompson - Business Owner
07736 158058
 Email: addcleaning@outlook.com
 10 Parsons Green - Wetherby

Local Electrician

LS22 Electrical Ltd

(Est. 1982 - Collingham)

- ✓ ALL ASPECTS OF DOMESTIC ELECTRICAL INSTALLATIONS
- ✓ NEW INSTALLATIONS, ALTERATIONS & REPAIRS
- ✓ TELEPHONE & COMPUTER CABLE INSTALLATIONS & REPAIRS
- ✓ NO JOB TOO SMALL!!!
- ✓ COMPETITIVE, EFFICIENT, TIDY & FRIENDLY SERVICE

For advice or to arrange a visit call Geoff on

07791 844305

E: service@ls22electrical.co.uk

Minstead, The Avenue
 Collingham, LS22 5BU



MARSLAND ROOFING LTD

Commercial & Domestic

REPAIR WORK OR A COMPLETE NEW ROOF

Flat roofs/re-roofing • Slating/tiling
 Guttering/plastic fascia and soffits
 Joinery work • Lead work

Quality workmanship at affordable prices

Insurance work welcome
 All work guaranteed

For a free estimate call

01132 286723 / 07770 732278

shebowman@hotmail.co.uk



SMT MAINTENANCE

SHAUN TURNBULL

Carpenter / Handyman

07769 324358 / 01133 000695

e: shaun.smtmaintenance@outlook.com

Follow us on Instagram:

[smt_property_maintenance_](https://www.instagram.com/smt_property_maintenance_)

HYLAND BUILDERS LTD EST 1974

Building, Roofing and Glazing Contractors

DOMESTIC, INDUSTRIAL AND COMMERCIAL - EXTENSIONS & ALTERATIONS
 SPECIALISTS FOR ALL YOUR BUILDING AND MAINTENANCE NEEDS

Flat Roof Specialists • Roof Repairs (strip & recovers) • Replacement Windows & Double Glazing • Drainage Drives • Garden Walling • Paving (slab or block) • Fencing • Landscape Gardening • Plastering • Pebble Dashing
 Pointing • Guttering & Fall-pipes • Painting & Decorating • Security Services • UPVC, Facias & Cladding

LEEDS CITY COUNCIL APPROVED - GRANT WORK - ALL WORK GUARANTEED

24 HOUR EMERGENCY SERVICES FOR GLAZING, PLUMBING & BLOCKED DRAINS

(The impossible we can do immediately, miracles take a little longer)

FOR ADVICE AND PERSONAL ATTENTION CALL

07710 099596 or 01937 572596 (24hrs)

10 ROSE CROFT, EAST KESWICK, LEEDS, LS17 9HR





DEVELOPING EXCLUSIVE NEW BUILD AND CONVERSION HOMES IN THE BEST LOCATIONS

For details of our forthcoming developments or to discuss how we can unlock the value of land or buildings you may wish to sell please contact our award winning team.

0113 268 3416

info@parklanehomes.co.uk

www.parklanehomes.co.uk



J K EGAN



**High class upholsterer
and re-cover work specialist
with 30 years experience**

- No job too large or small • All work guaranteed
- Full re-upholstery service • Extensive range of quality fabrics and made to measure service
- Re-upholsterer of Bridgecraft Suites

Tel: 01132 198459 or 07747 808896

johnnegan2577@gmail.com

GREYSTONES - STAITHES

Furnished holiday home to rent in the heart of the old village on the picturesque east coast.

Sleeps 9 in 5 bedrooms (1 En Suite)

Ideal for long weekends, midweek breaks and family holidays.

Contact 01937 574177

www.greystones-staithes.co.uk



LOCKFARR LOCKSMITH & CCTV

Norman Farrar

MPL NATIONALLY TRAINED LOCKSMITH
FULLY TRAINED CCTV INSTALLER

07760 111418

norman_farrar@hotmail.com

Find us on Facebook – Lockfarr Locksmith and CCTV



Paw x Paw



Dog Walking & Pet Visits

Based in East Keswick & covering local surrounding areas.

All enquiries welcome

Fully insured & DBS checked

Contact Emma 07379 060607 Email: ejpinnington@gmail.com



CABINET MAKER / FRENCH POLISHER

Also floor sanding and re-polishing

Edward W. Vickerman

01132 738242

247 Main Street, Shadwell, Leeds, LS17 8LA

MOBILE PICTURE FRAMING

Door-to-door Collect & Deliver Service

Details at;

www.polkadotpicturesandframing.co.uk

LOCKSMITH & SECURITY INSTALLER

24 Hour Emergency Service
DBS Checked & City & Guilds Certified

Lock Upgrades • CCTV & Alarm
Installation • Door & Window Repairs

Call Andy: 07721 876571

www.lemonlocksmith.co.uk



HEATING OIL DIRECT TO YOUR HOME
STORAGE TANK SUPPLY AND INSTALLATION
EMERGENCY SERVICE & SATURDAY DELIVERY

WWW.TATEOIL.CO.UK

CALL: 08456 43 44 43

LEEDS ROAD, OTLEY, W. YORKS, LS21 3BB

THORNER FLOORING SERVICES

ALL TYPES OF FLOOR COVERING SUPPLIED AND FITTED

CARPETS • RUGS • VINYL • WOOD



THE MOBILE SHOWROOM
1000'S OF SAMPLES BROUGHT
TO YOUR DOOR



8 St. Peter's Garth
Thorner, Leeds
LS14 3EE

01132 892344

07774 171744

craig@thornerflooring.co.uk
www.thornerflooring.co.uk

Find us on

DECORATORS
& PLUMBERS

ANTHONY SHORTALL

Your local

PAINTER & DECORATOR

City & Guilds Qualified
Apprentice Trained

No job too small or too large

01133 930960 / 07711 706679



S.P. Harrison

PROFESSIONAL



Painting & Decorating

Quality paperhanging & painting

01132 813956 / 07961 181848

Established 1985 • Barwick-in-Elmet

No VAT

MAXWELL DECORATORS

Discounts for OAPs

30 years experience

References available if required

T: 01132 268279

M: 07448 130794

28 Elmhurst Close, Shadwell, LS17 8BD

SAM WATTS

ALL PLUMBING INSTALLATIONS
AND REPAIRS

Free estimates ▪ No call out
charges ▪ No job too small ▪ City &
Guilds certified

01937 573223 / 07759 060709



Professional
PLUMBING & HEATING 
Engineers

Bathrooms ▪ Glazing ▪ Gas Installations

M. MARTIN

(ENG TECH, LCGI, MCIPHE, RP, GAS SAFE REGISTERED)
Established 1981 - Fully Insured

01132 737197 / 07850 971471

www.leedsplumbingandheating.co.uk
enquiries@leedsplumbingandheating.co.uk
707 Shadwell Lane, Shadwell, LS17 8ET



SFR
**PLUMBING
& HEATING**

Contact Stefan

07833 476 252

www.sfrplumbingandheating.co.uk
sfrplumbingandheating@gmail.com

- * New Boiler Installations & Service
- * Cookers & Fires
- * Landlords Gas Safety Certificates
- * Unvented Systems

- * New & Replacement Radiators
- * Power Flushes
- * Shower & Bathroom Suites
- * Tiling
- * Repairs & Maintenance



GARDENING & LANDSCAPE SERVICES



Local, reliable and professional services for all aspects of hard and soft landscaping
For more information and a FREE ESTIMATE call

01937 579117 / 07889 657537

jmaservicesltd@yahoo.co.uk
www.jmalandscaping.co.uk

GARDENS & TREES

Garden Services

Grass Maintenance • Patios &
Paving • Fencing & Hedging

Call Andy on

01937 573160 / 07964 180975

Bardsey based - City & Guilds - NPTC

DALBY LANDSCAPES

Landscape gardening, fencing & general garden maintenance • Weekly, fortnightly or one-off garden tidy • All aspects of tree services undertaken

Nigel Dalby 07752 586565

Ben Dalby 07840 442628

01937 574583

www.dalbylandscapes.co.uk



BARDSEY
TREE SERVICES LTD

01937 573689

info@bardseytrees.co.uk
www.bardseytrees.co.uk

TREE SURGEONS AND ARBORICULTURAL CONTRACTORS

All aspects of tree surgery & felling

- Hedge cutting/removal
- Stump grinding
- Site clearance for the construction industry
- Suppliers of woodchip
- TPO/conservation area checks
- Tree surveys & reports (free estimates)
- Emergency call out
- £10 million public liability insurance

GRAHAM

Landscapes

THE AWARD WINNING
GARDEN BUILDERS

01937 580 607

07752 093361

FREE ADVICE & ESTIMATES

EVERYTHING YOUR GARDEN NEEDS

- | | |
|----------------------|-----------------------------------|
| ▪ Block paving | ▪ Low maintenance gardens |
| ▪ Concreting | ▪ One-off tidy ups |
| ▪ Decking | ▪ Pergolas |
| ▪ Drives | ▪ Paths |
| ▪ Fencing | ▪ Patios/Repointing |
| ▪ Garden maintenance | ▪ Power washing |
| ▪ Garden walls | ▪ Resin bound gravel surfaces |
| ▪ Gates | ▪ Shed bases |
| ▪ Gravelling | ▪ Turfing |
| ▪ Gutter cleaning | 12 MONTH GUARANTEE |
| | £2 MILLION LIABILITY COVER |

HEALTH & WELLBEING

CHIROPODIST - HOME VISITS

PAULINE HUGHES

MSSCh REG.

01132 892347 / 07745 950528

SCARCROFT - LEEDS - LS14 3BS

Specialist physiotherapy service for those living with and beyond cancer

CALL LYNN ON

07904 109 658

e: lynn@rehabbeyondcancer.com

w: www.rehabbeyondcancer.com



Rehab Beyond Cancer



Wood View

SPORTS MASSAGE & HOLISTIC THERAPIES

Relax | Renew | Revive

Sports Massage
Therapeutic Massage
Aromatherapy Massage
Reflexology

T: 07590 950 083

www.woodviewtherapies.co.uk

Live-in care and companionship

An affordable alternative to a Residential Care Home

CALL GARY ON:

01254 375023 07419 111981

g.derbyshire@promedica24.co.uk

www.promedica24careathome.co.uk

PROMEDICA24



The best home to be in is **your own**

Having Home Instead Senior Care help me around the house means I don't have to go anywhere.

Stanley T.

– Stanley T.
Client

If, like Stanley, you would like to remain in your own home, we can help.

**homeinstead.co.uk/wetherby
or call 01937 220510**

Each Home Instead Senior Care® franchise office is independently owned and operated. Copyright © Home Instead Senior Care 2019.



PERSONAL & FINANCIAL SERVICES

G.E. HARTLEY & SON LTD.

The Complete Funeral Service

A Family Run Business - Est. 1808

24 Hour Personal Service • Private Chapels of Rest
Monumental Masonry • Pre-paid Funeral Plans

THORNER: 01132 892354

GARFORTH: 01132 862980

WETHERBY: 01937 588888

26 Main Street, Thorner, Leeds, LS14 3DX



COUNSELLING - ADRIENNE CREW (MBACP)

Registered member of the British Association for Counselling & Psychotherapy

Counselling can provide valuable support when there is a crisis.

I can offer help with the following;

**RELATIONSHIPS - COUPLE COUNSELLING - DEPRESSION
BEREAVEMENT - WORK LIFE BALANCE - ANXIETY - ANGER ISSUES
LOW SELF-ESTEEM**

Tel: 07715 267676 Email: adrienne.e2@gmail.com

www.adriennecrew.co.uk

Gillbeck Associates Ltd ACCOUNTING / BOOKKEEPING / TAX & PAYROLL

A professional service at very affordable
rates - let us save you money!

01937 585432

www.gillbeckassociates.co.uk



FJB Accounting Limited

Tax Returns, Company Accounts,
Payroll, Bookkeeping, MTD, VAT

Tel. 0797 270 3397

Email: fiona@fjb-books.co.uk

Parker Hartley & Co. Financial Accountants

SERVICES INCLUDE

Free consultation and quote • Advice on setting up
your business • Annual accounts preparation •
Assistance in preparing accounts, business plans,
budgets, projections • Personal tax • Full bookkeeping
services, including preparation of VAT returns • Advice
on buying, selling and running a business • Wages,
payroll and monthly PAYE

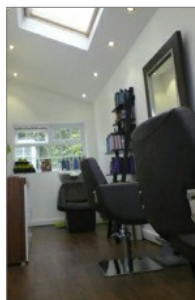
Tel: 01937 572022 / 01904 612455

Fax: 01904 672493

info@parkerhartley.co.uk

2 Waverley Street, The Groves, York, YO31 7QZ

EKOne HAIRDRESSING BESPOKE COLOURING & RESTYLING



**STATE REGISTERED
MASTER CRAFTSMAN**

Professional salon
environment, with
off road parking

Call Elaine on

01937 72550 /

07762 024229

3 The Grove, East Keswick

Andrew Morgan Opticians

NHS & Private Eye Examination / Contact
Lenses / Wide Range of Spectacle Frames /
ZEISS, ACUVUE & Lens Specialists
HOME VISITS AVAILABLE

01937 849933

170 High Street, Boston Spa

If you would like to place an
advert for your business in this
magazine please contact

Stephen Scales at:

bardseypcc@gmail.com

07929 062058



**Adrian Wood
Boston Spa
Garage**

SERVICING CARS LOCALLY FOR OVER 30 YEARS



Moor End, Boston Spa, Wetherby LS23 6ER
Tel: 01937 844400



**Wetherby
Body Shop**

**BODY SHOP
REPAIRS**

**All types of Accident
and Repair Work**

Unit 10 Erivan Park, Sandbeck Way, Wetherby LS22 7DN
Tel: 01937 580700

VENUE HIRE



Keswick Methodist Church

Main Street East Keswick
For Meeting Rooms or Hall Hire
Contact Donah Hendrickson
01937 574603 / 07914 043836

CALLISTER HALL BARDSEY

Private functions & meetings
Bookings: Pauline Tatman
01937 574236

East Keswick Village Hall

The perfect venue for all occasions

Spacious Function Rooms • Stage
Bar • Kitchen • Terrace • Events Field
Ample Parking • Disabled Access

Visit: **www.eastkeswickvillagehall.org**
or call **07914 007267** for details.

BARDSEY VILLAGE HALL

BOOKINGS - ROSIE STENTIFORD
01937 572652

Main Hall • Stage • Kitchen • Carpark
AVAILABLE FOR HIRE



The Parish of Bardsey with East Keswick

Incumbent: Revd Angela Hannafin

All Hallows Church

Church Lane, Bardsey, LS17 9DH

Churchwarden: Jacquie Earnshaw

01937 574877

Saint Mary Magdalene Church

Moor Lane, East Keswick, LS17 9ES

Churchwarden: Fiona Siekierkowski

01937 572836

Parish Administrator: Elizabeth Otty

Parish Office

Callister Hall, Woodacre Lane

Bardsey, Leeds, LS17 9DG

T: 01937 574273

E: bardseyparishchur@btinternet.com

www.bardseyekparish.com
